

Please acknowledge the Mandatory Disclosure for your ready reference. Please upload the same to our JIS group website within 8th July immediately for AICTE purpose.

# MANDATORY DISCLOSURE

➤ 1

AICTE FILE NO.

**F. NO- 06/02/WB/ENGG/2008/10**

DATE & PERIOD OF LAST APPROVAL

**28.05.2009 For 2009-2010**

➤ 2.

NAME OF THE  
INSTITUTION

**ABACUS INSTITUTE OF ENGINEERING & MANAGEMENT**



ADDRESS OF THE  
INSTITUTION

**NUTANGRAM \* MOGRA \* HOOGHLY**

CITY & PIN CODE

**MOGRA \* PIN- 712148**

STATE

**WEST-BENGAL**

PHONE NUMBER WITH STD CODE

**☎03213-222-125 / 202076**

FAX NUMBER WITH STD CODE

**FAX- 03213-222-657**

OFFICE HOURS OF THE  
INSTITUTION

**10.00 A.M. TO 5.00 P.M.**

ACADEMIC HOURS AT THE INSTITUTION

**10.00 AM TO 5.00 P.M.**

**e-mail-**

**[aiem08@yahoo.com](mailto:aiem08@yahoo.com)**

**Website**

**[www.abacusinstitute.com](http://www.abacusinstitute.com)**

NEAREST RAILWAY STATION (Distance in K.M)

**MOGRA (E.Rly) 2.5 K.M**

NEAREST AIRPORT (Distance in K.M) ✈

**NETAJI SUBHASH  
CHANDRA BOSE  
INTERNATIONAL  
AIRPORT 50 K.M**



3

TYPE OF INSTITUTION

**PRIVATE SELF FINANCED**

CATEGORY (1) OF THE INSTITUTION

**NON MINORITY**

CATEGORY (2) OF THE INSTITUTION

**CO-EDUCATION**

4

NAME OF THE ORGANIZATION RUNNING THE INSTITUTE

**CHINSURAH ABACUS EDUCATIONAL SOCIETY**

TYPE OF ORGANIZATION

**SOCIETY**

**(Registered under Societies Registration Act)**

ADDRESS OF THE ORGANISATION

**KARUNA SAWAN APARTMENT (LICHUBAGAN)  
G.T ROAD \* BANDEL \* HOOGHLY \* PIN-712123**

REGISTERED WITH

**REGISTRAR OF FIRMS AND SOCIETIES & NON  
TRADING CORPORATION. (W.B)**

REGISTRATION DATE

**14.07.2006**

5

NAME OF THE AFFILIATING UNIVERSITY

**WEST BENGAL UNIVERSITY OF TECHNOLOGY**

ADDRESS

**BF-142, SALT LAKE CITY \* SECTOR-I \* KOLKATA-  
700064**

WEBSITE

[www.wbut.net](http://www.wbut.net) / [www.wbut.ac/in](http://www.wbut.ac/in)

LATEST AFFILIATION PERIOD

**2009-2010 vide letter No-  
240(AICTE)/IC/AFFILIATION/2009 Dt- 30.06.09**

**6**

NAME OF THE PRINCIPAL

**PROF. Dr. LAKSHMI KANTA SAMANTA**

EXACT DESIGNATION

**PRINCIPAL**

PHONE NUMBER WITH STD CODE

**03213-222125 (O)**

**0342-262434 (R)**

FAX NO WITH STD CODE

**03213-222657**

EMAIL

**lk\_samanta@yahoo.com**

HIGHEST DEGREE

**Ph.D**

FIELD OF SPECIALIZATION

**RADIOPHYSICS & ELECTRONICS**

- 1. Prof. J.P Bandyopadhyay.**
- 2. Mr Nishes Ghosh.**
- 3. Mr. Dipak Kumar Das.**
- 4. Mr. Chandan Bhattacharya.**
- 5. Mr. Provat Roy.**
- 6. Mr. Arup Kumar Jetthi.**
- 7. Mr. Barun Das.**
- 8. Prof. S.N Biswas.**
- 9. Prof. D.N Bhattacharyya.**
- 10. Mr. Arunava Mukherjee.**
- 11. DTE Nominee.**
- 12. WBUT Nominee.**
- 13. AICTE Nominee.**
- 14. Higher Education.**
- 15. Principal.**

	FREQUENCY OF MEETINGS & DATE OF LAST MEETING
--	--

**3 Months Interval Dated : 12.12.2009**

8

ACADEMIC ADVISORY BODY

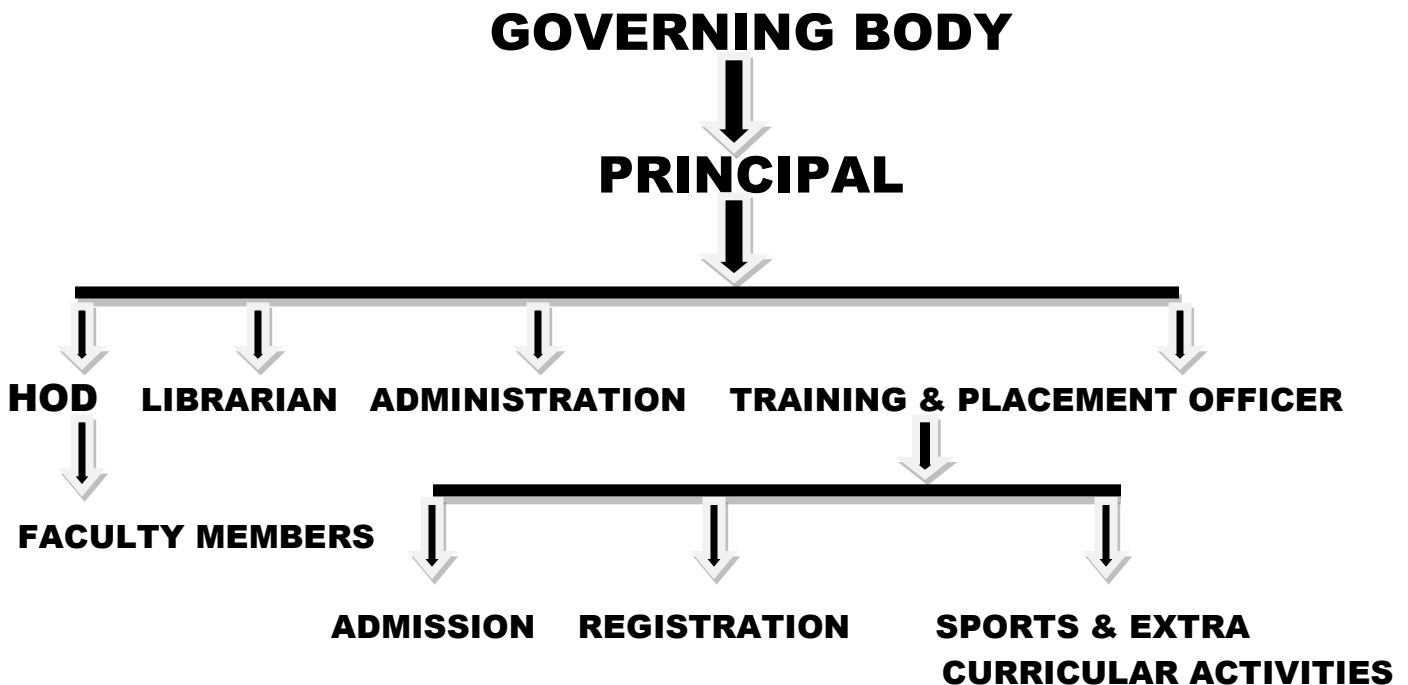
1. **Prof. J.P Bandyopadhyay.(Chairman)**
2. **Prof. L.K Samanta.(Principal)**
3. **Prof. S.N Biswas.** (Principal Heritage Inst. Of Tech)
4. **Prof. B.B Ghosh. (IEM Salt Lake)**
5. **Prof. B.N Chatterjee (IIT Kharagpur)**

Frequency of meetings & Date of Last Meeting

**At three months interval. Dt. 12.12.2009**

9

ORGANISATIONAL CHART



**10****STUDENTS FEEDBACK MECHANISM ON INSTITUTIONAL GOVERNANCE / FACULTY PERFORMANCE**

A questionnaire format has been prepared and the process of taking student's feed about the performance of the faculty members has already been started. This process helps in improving the academic performance of the faculty members and ultimately the performance of the institution.

**11****GRIEVANCE REDRESSAL MECHANISM FOR FACULTY, STAFF & STUDENTS**

**Grievance redressal mechanism committee has been formed for the above process.**

**Different committees like Academic, Disciplinary and Library etc have been formed.**



<b>12</b>	<b>Name of the Department</b>	<b>ELECTRONICS &amp; COMMUNICATION ENGG</b>
	<b>Course</b>	<b>B. TECH</b>
	<b>Level</b>	<b>UG</b>
	<b>1<sup>st</sup> Year of approval by the council</b>	<b>2008</b>
	<b>Year wise Sanctioned Intake</b>	<b>YEAR      2008      2009</b> <b>Sanct. Intake    60      60</b>
	<b>Year wise Actual Admission</b>	<b>YEAR      2008      2009</b> <b>Actual Admm.    59      58</b>
	<b>Cut of Marks – General Quota</b>	<b>50% Marks in Phy, Chem, Maths (H.S)</b>
	<b>% of students passed with Distinction</b>	<b>The 1<sup>st</sup> Batch appeared for their 3<sup>rd</sup> Semester Examination 70%</b>
	<b>Students Placed</b>	<b>Not applicable at present</b>
	<b>Average Pay package Rs./ Year</b>	<b>Not applicable at present</b>
	<b>Students opted for Higher Studies</b>	<b>Not applicable at present</b>
	<b>Accreditation Status of the course</b>	<b>Not eligible yet</b>
	<b>Doctoral Course</b>	<b>No</b>
	<b>Foreign Collaborations, if any</b>	<b>No</b>
	<b>Professional Society Membership</b>	<b>No</b>
	<b>Professional Activities</b>	<b>No</b>
	<b>Consultancy Activities</b>	<b>No</b>
	<b>Grants Fetched</b>	<b>Nil</b>
	<b>Departmental Achievements</b>	
	<b>Distinguished Alumni</b>	<b>Not Applicable</b>

<b>12</b>	<b>Name of the Department</b>	<b>COMPUTER SCIENCE ENGINEERING</b>		
	<b>Course</b>	<b>B. TECH</b>		
	<b>Level</b>	<b>UG</b>		
	<b>1<sup>st</sup> Year of approval by the council</b>	<b>2008</b>		
	<b>Year wise Sanctioned Intake</b>	<b>YEAR</b>	<b>2008</b>	<b>2009</b>
		<b>Sanct. Intake</b>	<b>60</b>	<b>60</b>
	<b>Year wise Actual Admission</b>	<b>YEAR</b>	<b>2008</b>	<b>2009</b>
		<b>Actual Admm.</b>	<b>58</b>	<b>42</b>
	<b>Cut of Marks – General Quota</b>	<b>50% Marks in Phy, Chem, Maths (H.S)</b>		
	<b>% of students passed with Distinction</b>	<b>The 1<sup>st</sup> Batch appeared for their 3<sup>rd</sup> Semester Examination 75%</b>		
	<b>Students Placed</b>	<b>Not applicable at present</b>		
	<b>Average Pay package Rs./ Year</b>	<b>Not applicable at present</b>		
	<b>Students opted for Higher Studies</b>	<b>Not applicable at present</b>		
	<b>Accreditation Status of the course</b>	<b>Not eligible yet</b>		
	<b>Doctoral Course</b>	<b>No</b>		
	<b>Foreign Collaborations, if any</b>	<b>No</b>		
	<b>Professional Society Membership</b>	<b>No</b>		
	<b>Professional Activities</b>	<b>No</b>		
	<b>Consultancy Activities</b>	<b>No</b>		
	<b>Grants Fetched</b>	<b>Nil</b>		
	<b>Departmental Achievements</b>			
	<b>Distinguished Alumni</b>	<b>Not Applicable</b>		

<b>12</b>	<b>Name of the Department</b>	<b>INFORMATION TECHNOLOGY</b>
	<b>Course</b>	<b>B. TECH</b>
	<b>Level</b>	<b>UG</b>
	<b>1<sup>st</sup> Year of approval by the council</b>	<b>2008</b>
	<b>Year wise Sanctioned Intake</b>	<b>YEAR      2008      2009</b> <b>Sanct. Intake   60      60</b>
	<b>Year wise Actual Admission</b>	<b>YEAR      2008      2009</b> <b>Actual Admm.   58      04</b>
	<b>Cut of Marks – General Quota</b>	<b>50% Marks in Phy, Chem, Maths (H.S)</b>
	<b>% of students passed with Distinction</b>	<b>The 1<sup>st</sup> Batch appeared for their 3<sup>rd</sup> Semester Examination 77%</b>
	<b>Students Placed</b>	<b>Not applicable at present</b>
	<b>Average Pay package Rs./ Year</b>	<b>Not applicable at present</b>
	<b>Students opted for Higher Studies</b>	<b>Not applicable at present</b>
	<b>Accreditation Status of the course</b>	<b>Not eligible yet</b>
	<b>Doctoral Course</b>	<b>No</b>
	<b>Foreign Collaborations, if any</b>	<b>No</b>
	<b>Professional Society Membership</b>	<b>No</b>
	<b>Professional Activities</b>	<b>No</b>
	<b>Consultancy Activities</b>	<b>No</b>
	<b>Grants Fetched</b>	<b>Nil</b>
	<b>Departmental Achievements</b>	
	<b>Distinguished Alumni</b>	<b>Not Applicable</b>

<b>12</b>	<b>Name of the Department</b>	<b>APPLIED ELECTRONICS &amp; INST ENGG</b>		
	<b>Course</b>	<b>B. TECH</b>		
	<b>Level</b>	<b>UG</b>		
	<b>1<sup>st</sup> Year of approval by the council</b>	<b>2008</b>		
	<b>Year wise Sanctioned Intake</b>	<b>YEAR</b>	<b>2008</b>	<b>2009</b>
		<b>Sanct. Intake</b>	<b>60</b>	<b>60</b>
	<b>Year wise Actual Admission</b>	<b>YEAR</b>	<b>2008</b>	<b>2009</b>
		<b>Actual Admm.</b>	<b>60</b>	<b>22</b>
	<b>Cut of Marks – General Quota</b>	<b>50% Marks in Phy, Chem, Maths (H.S)</b>		
	<b>% of students passed with Distinction</b>	<b>The 1<sup>st</sup> Batch appeared for their 3<sup>rd</sup> Semester Examination 65%</b>		
	<b>Students Placed</b>	<b>Not applicable at present</b>		
	<b>Average Pay package Rs./ Year</b>	<b>Not applicable at present</b>		
	<b>Students opted for Higher Studies</b>	<b>Not applicable at present</b>		
	<b>Accreditation Status of the course</b>	<b>Not eligible yet</b>		
	<b>Doctoral Course</b>	<b>No</b>		
	<b>Foreign Collaborations, if any</b>	<b>No</b>		
	<b>Professional Society Membership</b>	<b>No</b>		
	<b>Professional Activities</b>	<b>No</b>		
	<b>Consultancy Activities</b>	<b>No</b>		
	<b>Grants Fetched</b>	<b>Nil</b>		
	<b>Departmental Achievements</b>			
	<b>Distinguished Alumni</b>	<b>Not Applicable</b>		

<b>13</b>	<b>Name of the Teaching Staff</b>	<b>Payel Ghosh</b>		
	<b>Designation</b>	<b>Lecturer</b>		
	<b>Department</b>	<b>Mathematics</b>		
	<b>Date of joining the Institution</b>	<b>25.08.2009</b>		
	<b>Qualifications with Class/ Grade</b>	<b>M.Sc.(Applied Mathematics)</b>		
	<b>Total Experience in Years</b>	<b>Teaching</b>	<b>Industry</b>	<b>Research</b>
	<b>Papers Published</b>	<b>National</b>		<b>International</b>
	<b>Papers Presented in Conferences</b>	<b>National</b>		<b>International</b>
	<b>PhD Guide? Give field &amp; University</b>	<b>Nil</b>		
	<b>PhDs/ Projects Guided</b>	<b>Nil</b>		
	<b>Books Published/ IPRs/Patents</b>	<b>Nil</b>		
	<b>Professional Memberships</b>	<b>Nil</b>		
	<b>Consultancy Activities</b>	<b>Nil</b>		
	<b>Awards</b>	<b>Nil</b>		
	<b>Grants fetched</b>	<b>Nil</b>		
	<b>Interaction with Professional Institution</b>	<b>Nil</b>		



<b>13</b>	<b>Name of the Teaching Staff</b>	<b>Mitali Rana(Shaw)</b>		
	<b>Designation</b>	<b>Lecturer</b>		
	<b>Department</b>	<b>Computer Science</b>		
	<b>Date of joining the Institution</b>	<b>22.08.2008</b>		
	<b>Qualifications with Class/ Grade</b>	<b>M.Tech</b>		
	<b>Total Experience in Years</b>	<b>Teaching</b>	<b>Industry</b>	<b>Research</b>
	<b>Papers Published</b>	<b>National</b>		<b>International</b>
	<b>Papers Presented in Conference</b>	<b>National</b>		<b>International</b>
	<b>PhD Guide? Give field &amp; University</b>	<b>Nil</b>		
	<b>PhDs/ Projects Guided</b>	<b>Nil</b>		
	<b>Books Published/ IPRs/Patents</b>	<b>Nil</b>		
	<b>Professional Memberships</b>	<b>Nil</b>		
	<b>Consultancy Activities</b>	<b>Nil</b>		
	<b>Awards</b>	<b>Nil</b>		
	<b>Grants fetched</b>	<b>Nil</b>		
	<b>Interaction with Professional Institution</b>	<b>Nil</b>		



<b>13</b>	<b>Name of the Teaching Staff</b>	<b>Amit Basu</b>		
	<b>Designation</b>	<b>Lecturer</b>		
	<b>Department</b>	<b>EIE</b>		
	<b>Date of joining the Institution</b>	<b>17.08.2009</b>		
	<b>Qualifications with Class/ Grade</b>	<b>M.Tech</b>		
	<b>Total Experience in Years</b>	<b>Teaching</b>	<b>Industry 14months</b>	<b>Research</b>
	<b>Papers Published</b>	<b>National</b>		<b>International</b>
	<b>Papers Presented in Conferences</b>	<b>National</b>		<b>International</b>
	<b>PhD Guide? Give field &amp; University</b>	<b>Nil</b>		
	<b>PhDs/ Projects Guided</b>	<b>Nil</b>		
	<b>Books Published/ IPRs/Patents</b>	<b>Nil</b>		
	<b>Professional Memberships</b>	<b>Nil</b>		
	<b>Consultancy Activities</b>	<b>Nil</b>		
	<b>Awards</b>	<b>Nil</b>		
	<b>Grants fetched</b>	<b>Nil</b>		
	<b>Interaction with Professional Institution</b>	<b>Nil</b>		



<b>13</b>	<b>Name of the Teaching Staff</b>	<b>Tanushree Bhattacharya</b>		
	<b>Designation</b>	<b>Lecturer</b>		
	<b>Department</b>	<b>Chemistry</b>		
	<b>Date of joining the Institution</b>	<b>01.08.2008</b>		
	<b>Qualifications with Class/ Grade</b>	<b>M.Sc.</b>		
	<b>Total Experience in Years</b>	<b>Teaching 2Yrs.</b>	<b>Industry</b>	<b>Research</b>
	<b>Papers Published</b>	<b>National</b>		<b>International</b>
	<b>Papers Presented in Conferences</b>	<b>National</b>		<b>International</b>
	<b>PhD Guide? Give field &amp; University</b>	<b>Nil</b>		
	<b>PhDs/ Projects Guided</b>	<b>Nil</b>		
	<b>Books Published/ IPRs/Patents</b>	<b>Nil</b>		
	<b>Professional Memberships</b>	<b>Nil</b>		
	<b>Consultancy Activities</b>	<b>Nil</b>		
	<b>Awards</b>	<b>Nil</b>		
	<b>Grants fetched</b>	<b>Nil</b>		
	<b>Interaction with Professional Institution</b>	<b>Nil</b>		

<b>13</b>	<b>Name of the Teaching Staff</b>	<b>Mainak Kumar Kundu</b>		
	<b>Designation</b>	<b>Lecturer</b>		
	<b>Department</b>	<b>ECE</b>		
	<b>Date of joining the Institution</b>	<b>22.02.2010</b>		
	<b>Qualifications with Class/ Grade</b>	<b>M.Tech</b>		
	<b>Total Experience in Years</b>	<b>Teaching 20 months</b>	<b>Industry</b>	<b>Research 01 Years</b>
	<b>Papers Published</b>	<b>National</b>		<b>International</b>
	<b>Papers Presented in Conferences</b>	<b>National</b>		<b>International</b>
	<b>PhD Guide? Give field &amp; University</b>	<b>Nil</b>		
	<b>PhDs/ Projects Guided</b>	<b>Nil</b>		
	<b>Books Published/ IPRs/Patents</b>	<b>Nil</b>		
	<b>Professional Memberships</b>	<b>Nil</b>		
	<b>Consultancy Activities</b>	<b>Nil</b>		
	<b>Awards</b>	<b>Nil</b>		
	<b>Grants fetched</b>	<b>Nil</b>		
	<b>Interaction with Professional Institution</b>	<b>Nil</b>		



<b>13</b>	<b>Name of the Teaching Staff</b>	<b>Dhrubojyoti Ghosh</b>		
	<b>Designation</b>	<b>Lecturer</b>		
	<b>Department</b>	<b>ECE</b>		
	<b>Date of joining the Institution</b>	<b>30.08.2009</b>		
	<b>Qualifications with Class/ Grade</b>	<b>M.Tech</b>		
	<b>Total Experience in Years</b>	<b>Teaching</b>	<b>Industry</b>	<b>Research</b>
	<b>Papers Published</b>	<b>National</b>		<b>International</b>
	<b>Papers Presented in Conferences</b>	<b>National</b>		<b>International</b>
	<b>PhD Guide? Give field &amp; University</b>	<b>Nil</b>		
	<b>PhDs/ Projects Guided</b>	<b>Nil</b>		
	<b>Books Published/ IPRs/Patents</b>	<b>Nil</b>		
	<b>Professional Memberships</b>	<b>Nil</b>		
	<b>Consultancy Activities</b>	<b>Nil</b>		
	<b>Awards</b>	<b>Nil</b>		
	<b>Grants fetched</b>	<b>Nil</b>		
	<b>Interaction with Professional Institution</b>	<b>Nil</b>		



<b>13</b>	<b>Name of the Teaching Staff</b>	<b>Tanmoy Chakraborty</b>		
	<b>Designation</b>	<b>Lecturer</b>		
	<b>Department</b>	<b>IT</b>		
	<b>Date of joining the Institution</b>	<b>01.08.2009</b>		
	<b>Qualifications with Class/ Grade</b>	<b>M.Tech</b>		
	<b>Total Experience in Years</b>	<b>Teaching 6 months</b>	<b>Industry</b>	<b>Research</b>
	<b>Papers Published</b>	<b>National</b>		<b>International</b>
	<b>Papers Presented in Conferences</b>	<b>National</b>		<b>International</b>
	<b>PhD Guide? Give field &amp; University</b>	<b>Nil</b>		
	<b>PhDs/ Projects Guided</b>	<b>Nil</b>		
	<b>Books Published/ IPRs/Patents</b>	<b>Nil</b>		
	<b>Professional Memberships</b>	<b>Nil</b>		
	<b>Consultancy Activities</b>	<b>Nil</b>		
	<b>Awards</b>	<b>Nil</b>		
	<b>Grants fetched</b>	<b>Nil</b>		
	<b>Interaction with Professional Institution</b>	<b>Nil</b>		



<b>13</b>	<b>Name of the Teaching Staff</b>	<b>Koustava Kanti Mandal</b>		
	<b>Designation</b>	<b>Lecturer</b>		
	<b>Department</b>	<b>ECE</b>		
	<b>Date of joining the Institution</b>	<b>01.08.2009</b>		
	<b>Qualifications with Class/ Grade</b>	<b>M.Tech</b>		
	<b>Total Experience in Years</b>	<b>Teaching 7 months</b>	<b>Industry</b>	<b>Research</b>
	<b>Papers Published</b>	<b>National</b>		<b>International</b>
	<b>Papers Presented in Conferences</b>	<b>National</b>		<b>International</b>
	<b>PhD Guide? Give field &amp; University</b>	<b>Nil</b>		
	<b>PhDs/ Projects Guided</b>	<b>Nil</b>		
	<b>Books Published/ IPRs/Patents</b>	<b>Nil</b>		
	<b>Professional Memberships</b>	<b>Nil</b>		
	<b>Consultancy Activities</b>	<b>Nil</b>		
	<b>Awards</b>	<b>Nil</b>		
	<b>Grants fetched</b>	<b>Nil</b>		
	<b>Interaction with Professional Institution</b>	<b>Nil</b>		



<b>13</b>	<b>Name of the Teaching Staff</b>	<b>Nabanita Ganguly</b>		
	<b>Designation</b>	<b>Lecturer</b>		
	<b>Department</b>	<b>IT</b>		
	<b>Date of joining the Institution</b>	<b>01.02.2010</b>		
	<b>Qualifications with Class/ Grade</b>	<b>M.Tech</b>		
	<b>Total Experience in Years</b>	<b>Teaching 1 Year 8 months</b>	<b>Industry</b>	<b>Research</b>
	<b>Papers Published</b>	<b>National</b>		<b>International</b>
	<b>Papers Presented in Conferences</b>	<b>National</b>		<b>International</b>
	<b>PhD Guide? Give field &amp; University</b>	<b>Nil</b>		
	<b>PhDs/ Projects Guided</b>	<b>Nil</b>		
	<b>Books Published/ IPRs/Patents</b>	<b>Nil</b>		
	<b>Professional Memberships</b>	<b>Nil</b>		
	<b>Consultancy Activities</b>	<b>Nil</b>		
	<b>Awards</b>	<b>Nil</b>		
	<b>Grants fetched</b>	<b>Nil</b>		
	<b>Interaction with Professional Institution</b>	<b>Nil</b>		



<b>13</b>	<b>Name of the Teaching Staff</b>	<b>Susanta Kumar Chatterjee</b>		
	<b>Designation</b>	<b>Professor</b>		
	<b>Department</b>	<b>Physics</b>		
	<b>Date of joining the Institution</b>	<b>17.08.2009</b>		
	<b>Qualifications with Class/ Grade</b>	<b>M.Sc, Ph.D</b>		
	<b>Total Experience in Years</b>	<b>Teaching 30 Years</b>	<b>Industry</b>	<b>Research 20 Years</b>
	<b>Papers Published</b>	<b>National</b>		<b>International</b>
	<b>Papers Presented in Conferences</b>	<b>National</b>		<b>International</b>
	<b>PhD Guide? Give field &amp; University</b>	<b>Nil</b>		
	<b>PhDs/ Projects Guided</b>	<b>Nil</b>		
	<b>Books Published/ IPRs/Patents</b>	<b>Published Seven Research papers</b>		
	<b>Professional Memberships</b>	<b>Nil</b>		
	<b>Consultancy Activities</b>	<b>Nil</b>		
	<b>Awards</b>	<b>Nil</b>		
	<b>Grants fetched</b>	<b>Nil</b>		
	<b>Interaction with Professional Institution</b>	<b>Nil</b>		



<b>13</b>	<b>Name of the Teaching Staff</b>	<b>Abhijit Kundu</b>		
	<b>Designation</b>	<b>Lecturer</b>		
	<b>Department</b>	<b>ECE</b>		
	<b>Date of joining the Institution</b>	<b>01.02.2010</b>		
	<b>Qualifications with Class/ Grade</b>	<b>M.Tech (Final)</b>		
	<b>Total Experience in Years</b>	<b>Teaching 1 Yr.</b>	<b>Industry</b>	<b>Research 1Year</b>
	<b>Papers Published</b>	<b>National</b>		<b>International</b>
	<b>Papers Presented in Conferences</b>	<b>National</b>		<b>International</b>
	<b>PhD Guide? Give field &amp; University</b>	<b>Nil</b>		
	<b>PhDs/ Projects Guided</b>	<b>Nil</b>		
	<b>Books Published/ IPRs/Patents</b>	<b>Nil</b>		
	<b>Professional Memberships</b>	<b>Nil</b>		
	<b>Consultancy Activities</b>	<b>Nil</b>		
	<b>Awards</b>	<b>Nil</b>		
	<b>Grants fetched</b>	<b>Nil</b>		
	<b>Interaction with Professional Institution</b>	<b>Nil</b>		



<b>13</b>	<b>Name of the Teaching Staff</b>	<b>Sujay Kumar Patra</b>		
	<b>Designation</b>	<b>Lecturer</b>		
	<b>Department</b>	<b>ECE</b>		
	<b>Date of joining the Institution</b>			
	<b>Qualifications with Class/ Grade</b>	<b>ME</b>		
	<b>Total Experience in Years</b>	<b>Teaching</b>	<b>Industry</b>	<b>Research</b>
	<b>Papers Published</b>	<b>National</b>		<b>International</b>
	<b>Papers Presented in Conferences</b>	<b>National</b>		<b>International</b>
	<b>PhD Guide? Give field &amp; University</b>	<b>Nil</b>		
	<b>PhDs/ Projects Guided</b>			
	<b>Books Published/ IPRs/Patents</b>			
	<b>Professional Memberships</b>			
	<b>Consultancy Activities</b>			
	<b>Awards</b>			
	<b>Grants fetched</b>			
	<b>Interaction with Professional Institution</b>			



<b>13</b>	<b>Name of the Teaching Staff</b>	<b>Debasish Bera</b>		
	<b>Designation</b>	<b>Lecturer</b>		
	<b>Department</b>	<b>Mathematics</b>		
	<b>Date of joining the Institution</b>	<b>07.02.2010</b>		
	<b>Qualifications with Class/ Grade</b>	<b>M.Sc., M.Phil.(Applied Maths)</b>		
	<b>Total Experience in Years</b>	<b>Teaching 2 Years</b>	<b>Industry</b>	<b>Research</b>
	<b>Papers Published</b>	<b>National</b>		<b>International</b>
	<b>Papers Presented in Conferences</b>	<b>National</b>		<b>International</b>
	<b>PhD Guide? Give field &amp; University</b>	<b>Nil</b>		
	<b>PhDs/ Projects Guided</b>	<b>Nil</b>		
	<b>Books Published/ IPRs/Patents</b>	<b>Nil</b>		
	<b>Professional Memberships</b>	<b>Nil</b>		
	<b>Consultancy Activities</b>	<b>Nil</b>		
	<b>Awards</b>	<b>Nil</b>		
	<b>Grants fetched</b>	<b>Nil</b>		
	<b>Interaction with Professional Institution</b>	<b>Nil</b>		



<b>13</b>	<b>Name of the Teaching Staff</b>	<b>Mithu Sadhu</b>		
	<b>Designation</b>	<b>Lecturer</b>		
	<b>Department</b>	<b>CSE</b>		
	<b>Date of joining the Institution</b>	<b>01.02.2010</b>		
	<b>Qualifications with Class/ Grade</b>	<b>M.Tech (Final)</b>		
	<b>Total Experience in Years</b>	<b>Teaching</b>	<b>Industry</b>	<b>Research</b>
	<b>Papers Published</b>	<b>National</b>		<b>International</b>
	<b>Papers Presented in Conferences</b>	<b>National</b>		<b>International</b>
	<b>PhD Guide? Give field &amp; University</b>	<b>Nil</b>		
	<b>PhDs/ Projects Guided</b>	<b>Nil</b>		
	<b>Books Published/ IPRs/Patents</b>	<b>Nil</b>		
	<b>Professional Memberships</b>	<b>Nil</b>		
	<b>Consultancy Activities</b>	<b>Nil</b>		
	<b>Awards</b>	<b>Nil</b>		
	<b>Grants fetched</b>	<b>Nil</b>		
	<b>Interaction with Professional Institution</b>	<b>Nil</b>		



<b>13</b>	<b>Name of the Teaching Staff</b>	<b>Rini Ghsoh</b>		
	<b>Designation</b>	<b>Lecturer</b>		
	<b>Department</b>	<b>CSE</b>		
	<b>Date of joining the Institution</b>	<b>01.02.2010</b>		
	<b>Qualifications with Class/ Grade</b>	<b>M.Tech (Final)</b>		
	<b>Total Experience in Years</b>	<b>Teaching</b>	<b>Industry</b>	<b>Research</b>
	<b>Papers Published</b>	<b>National</b>		<b>International</b>
	<b>Papers Presented in Conferences</b>	<b>National</b>		<b>International</b>
	<b>PhD Guide? Give field &amp; University</b>	<b>Nil</b>		
	<b>PhDs/ Projects Guided</b>	<b>Nil</b>		
	<b>Books Published/ IPRs/Patents</b>	<b>Nil</b>		
	<b>Professional Memberships</b>	<b>Nil</b>		
	<b>Consultancy Activities</b>	<b>Nil</b>		
	<b>Awards</b>	<b>Nil</b>		
	<b>Grants fetched</b>	<b>Nil</b>		
	<b>Interaction with Professional Institution</b>	<b>Nil</b>		



<b>13</b>	<b>Name of the Teaching Staff</b>	<b>Nirban Kumar Saha</b>		
	<b>Designation</b>	<b>Lecturer</b>		
	<b>Department</b>	<b>AEIE</b>		
	<b>Date of joining the Institution</b>	<b>16.02.2010</b>		
	<b>Qualifications with Class/ Grade</b>	<b>M.Tech (Final)</b>		
	<b>Total Experience in Years</b>	<b>Teaching</b>	<b>Industry</b>	<b>Research</b>
	<b>Papers Published</b>	<b>National</b>		<b>International</b>
	<b>Papers Presented in Conferences</b>	<b>National</b>		<b>International</b>
	<b>PhD Guide? Give field &amp; University</b>	<b>Nil</b>		
	<b>PhDs/ Projects Guided</b>	<b>Nil</b>		
	<b>Books Published/ IPRs/Patents</b>	<b>Nil</b>		
	<b>Professional Memberships</b>	<b>Nil</b>		
	<b>Consultancy Activities</b>	<b>Nil</b>		
	<b>Awards</b>	<b>Nil</b>		
	<b>Grants fetched</b>	<b>Nil</b>		
	<b>Interaction with Professional Institution</b>	<b>Nil</b>		



<b>13</b>	<b>Name of the Teaching Staff</b>	<b>Rajib Chakraborty</b>		
	<b>Designation</b>	<b>Lecturer</b>		
	<b>Department</b>	<b>PHYSICS</b>		
	<b>Date of joining the Institution</b>	<b>01.02.2010</b>		
	<b>Qualifications with Class/ Grade</b>	<b>M.Sc</b>		
	<b>Total Experience in Years</b>	<b>Teaching</b>	<b>Industry</b>	<b>Research</b>
	<b>Papers Published</b>	<b>National</b>		<b>International</b>
	<b>Papers Presented in Conferences</b>	<b>National</b>		<b>International</b>
	<b>PhD Guide? Give field &amp; University</b>	<b>Nil</b>		
	<b>PhDs/ Projects Guided</b>	<b>Nil</b>		
	<b>Books Published/ IPRs/Patents</b>	<b>Nil</b>		
	<b>Professional Memberships</b>	<b>Nil</b>		
	<b>Consultancy Activities</b>	<b>Nil</b>		
	<b>Awards</b>	<b>Nil</b>		
	<b>Grants fetched</b>	<b>Nil</b>		
	<b>Interaction with Professional Institution</b>	<b>Nil</b>		



<b>13</b>	<b>Name of the Teaching Staff</b>	<b>Rajib Maitra</b>		
	<b>Designation</b>	<b>Lecturer</b>		
	<b>Department</b>	<b>MECHANICAL SCIENCES</b>		
	<b>Date of joining the Institution</b>	<b>01.02.2010</b>		
	<b>Qualifications with Class/ Grade</b>	<b>M.E</b>		
	<b>Total Experience in Years</b>	<b>Teaching</b>	<b>Industry 15 Yrs.</b>	<b>Research</b>
	<b>Papers Published</b>	<b>National</b>		<b>International</b>
	<b>Papers Presented in Conferences</b>	<b>National</b>		<b>International</b>
	<b>PhD Guide? Give field &amp; University</b>	<b>Nil</b>		
	<b>PhDs/ Projects Guided</b>	<b>Nil</b>		
	<b>Books Published/ IPRs/Patents</b>	<b>Nil</b>		
	<b>Professional Memberships</b>	<b>Nil</b>		
	<b>Consultancy Activities</b>	<b>Nil</b>		
	<b>Awards</b>	<b>Nil</b>		
	<b>Grants fetched</b>	<b>Nil</b>		
	<b>Interaction with Professional Institution</b>	<b>Nil</b>		



- 1. Central Selection Committee 90%**
- 2. Management Quota 10 % of total intake.**
- 3. Through Lateral Entry (10% directly in 2<sup>nd</sup> Year)**

## ENTRANCE TEST / ADMISSION CRITERIA

- 1. WEST BENGAL JOINT ENTRANCE EXAMINATION.**
- 2. ALL INDIA ENGINEERING ENTRANCE EXAMINATION.  
(RANK AS DECIDED BY CENTRAL SELECTION COMMITTEE)**

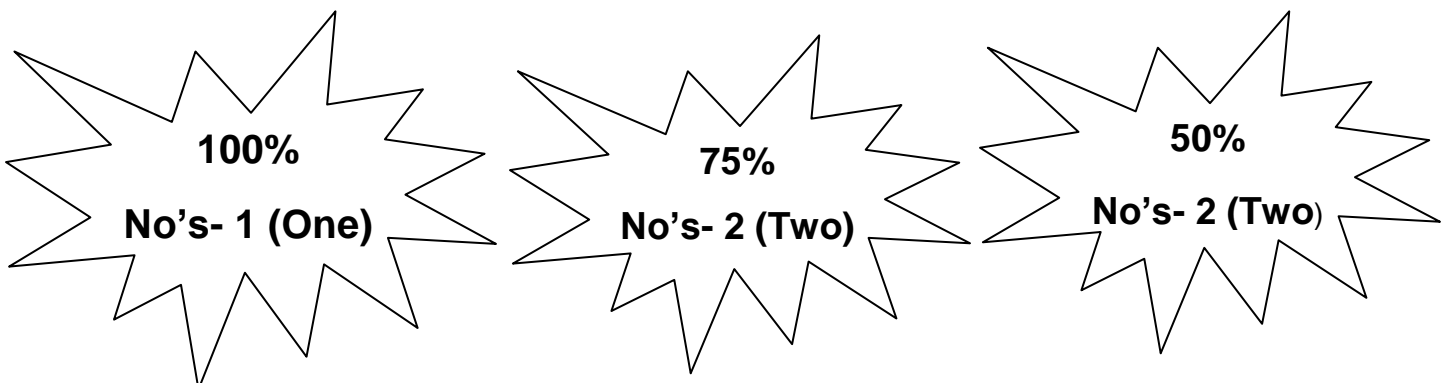
## CUT OFF / LAST CANDIDATE ADMITTED

**WBJEE RANK-  
AIEEE RANK –**

## FEES IN RUPEES

**Tuition Fees Rs. 21,500/- Per Semester**

## NUMBERS OF FREE WAIVERS OFFERED



	<b>ADMISSION CALENDAR</b>
--	---------------------------

**JULY OF EVERY YEAR**

	<b>PIO Quota</b>
--	------------------



**NO**

<b>15</b>	<b>INFRASTRUCTURAL INFORMATION</b>
-----------	------------------------------------

**8 Nos Class Room with area of 70 Sq Mt.**

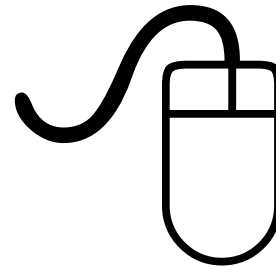
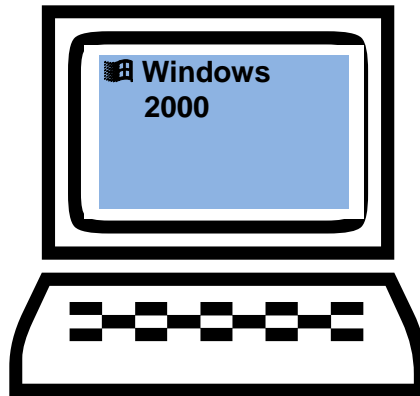
**2 Nos of Tutorial Room with area of 44 Sq Mt**

	<b>LABORATORY DETAILS</b>
--	---------------------------

1. *Basic Electrical Lab.*
2. *Circuit Theory Lab.*
3. *Electrical & Electronics Measurement Lab.*
4. *Data Structure Algorithms & Introduction to Computing Lab.*
5. *Analysis & Design of Information System.*
6. *Operation Research Lab.*
7. *Control System Lab.*
8. *Sensor & Transducer Lab.*
9. *Microprocessor & Microcontroller Lab.*
10. *Digital Electronics & Control Lab.*
11. *Analog Electronics Circuit Lab.*
12. *Analog & Digital Communication Lab.*
13. *Propagation & Antenna Lab.*
14. *Physics Lab.*
15. *Chemistry Lab.*
16. *Graphics (Drawing) Room.*
17. *Workshop.*
18. *English Language Teaching Lab.*

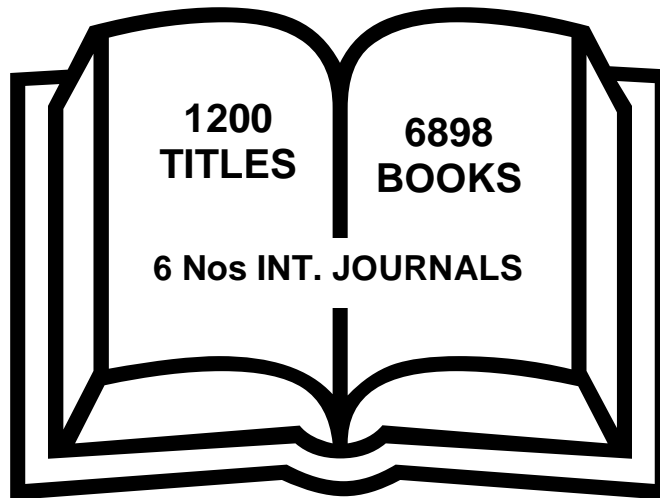
**COMPUTER CENTRE FACILITIES**

**COMPUTER LABORATORY WITH 120 Nos Connected  
in LAN**



**LIBRARY FACILITIES**

**MODERN LIBRARY WITH AN AREA OF 4800 Sq. Ft.**



AUDITORIUM / SEMINAR HALLS / AMPHI

## **Under Construction**

CAFETERIA

## **Canteen facility for students.**

INDOOR SPORTS FACILITY

### **1. Carom.**

OUTDOOR SPORTS FACILITIES

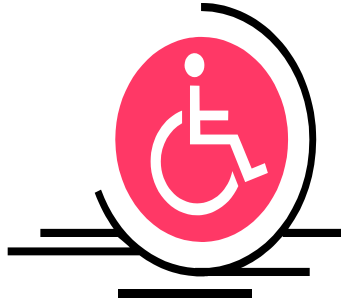
### **1. Football.**

### **2. Cricket.**

GYMNASIUM FACILITIES

**IN PROCESS**

FACILITIES FOR DISABLED



**Available**

ANY OTHER FACILITIES

- 1. Pick up facility for Students from Bandel Jn.**
- 2. Railway Concession facility for students.**



16

BOYS HOSTEL

**Boys Hostel facility is available with 60 seats capacity at “SHYAMANGAN” G.T Road, Bandel, Hooghly, PIN- 712123. Just 9 km distance from College Campus.**

**GIRLS HOSTEL**

**Girls Hostel facility is available with 60 seats capacity at “BHARATI DEBI LADIES HOSTEL” Nutangram, Mogra, Hooghly, PIN- 712148. Just 0.5 km distance from College Campus.**

**MEDICAL AND OTHER FACILITY AT HOSTEL**

**Medical, Security, Indoor Game and Pick up facility available.**

**17**

**ACADEMIC SESSIONS**

**1<sup>ST</sup> BATCH**

**2008-2012**

**2<sup>ND</sup> BATCH**

**2009-2013**

	EXAMINATION SYSTEM, YEAR / SEM
--	--------------------------------

**SEMESTER SYSTEM**

	PERIOD OF DECLARATION OF RESULTS
--	----------------------------------

**Usually Two months after the Semester Examination.**

➤ 

18	COUNSELING / MENTORING
----	------------------------

**Counseling for admission is being conducted by Central Selection Committee.**

	CAREER COUNSELING
--	-------------------

**A committee has been formed headed by T.P.O for grooming the students.**

	MEDICAL FACILITIES
--	--------------------

**Available**

STUDENTS INSURANCE

**In Process.**

19

STUDENTS ACTIVITY BODY

**Available**

CULTURAL ACTIVITIES

**Cultural Programmes such as Fest, Fresher's Welcome, Teachers Day are being organized.**

SPORTS ACTIVITIES

- 1. Inter Class Cricket Tournament.**
- 2. Inter Class Football Tournament.**
- 3. Carom Competition.**
- 4. Sports.**

LITERACY ACTIVITIES

**Internet Facility, Reading Facility available.**

MAGAZINE / NEWSLETTER

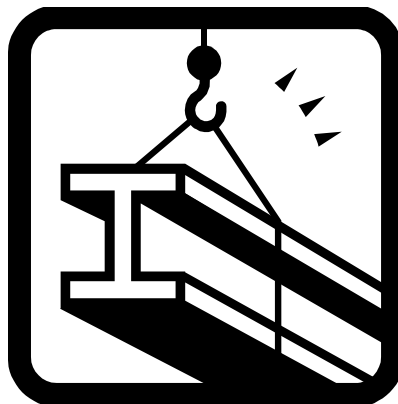
**Published Yearly.**

**TECHNICAL ACTIVITIES / TECH FEST**

**Once in a year**

**INDUSTRIAL VISITS / TOURS**

**Industry visit programme is being organized by TPO.  
so far the following industries has given there  
consent.**



1. IBM.
2. POWER & GRID.
3. PECON SOFT WARE.
4. CHANDRA'S CHEMICALS.
5. HINDUSTAN MOTORS.
6. DUNLOP INDIA LTD.
7. DURGAPUR STEEL PLANT.
8. BANIK RUBBER INDUSTRIES.
9. JAYSHREE TEXTILE.
10. ZTE TELECOMMUNICATION.
11. GNB MOTORS.
12. BANGLA BIJILI.

13.BANDEL THERMAL POWER STATION.

14. NALCO.

15.DURGAPUR CHEMICALS.

ALUMNI ACTIVITIES

**Does arise at present**

20

NAME OF THE INFORMATION OFFICER FOR RTI

**MR. HIMANISH BANERJEE**

**MR. ANIRUDDHA DAS**

DESIGNATION

**TRAINING & PLACEMENT OFFICER**

**ACCOUNTANT**

PHONE NO WITH STD CODE

**03213-202089**

**9831573195**

FAX NO WITH STD CODE

**03213-222657**

Email

➤ **4.**

**GOVERNANCE**

- i) Prof. Dr. Jyotiprakash Bandyopadhyay.(Chairman)
- ii) Mr. Nishes Ghosh.
- iii) Mr. Dipak Kumar Das.
- iv) Mr. Chandan Bhattacharyya.
- v) Mr. Provat Kumar Roy.
- vi) Mr. Arup Kumar Jetthi.
- vii) Mr. Barun Das.



**MEMBERS OF THE  
ACADEMIC  
ADVISORY BOARD**

- i)
- ii)
- iii)
- iv)



**FREQUENCY OF BOARD  
MEETINGS & ACADEMIC  
ADVISORY BOARD**

The said meeting are being held at 3 months interval i.e 4 times in a year.



## **ORGANISATIONAL CHART & PROCESS**



## **NATURE & EXTENT OF INVOLMENT OF FACULTY & STUDENTS IN ACADEMIC AFFAIRS / IMPROVEMENTS**

The faculty members took classes regularly and helped the students to perform the practical classes with devotion sincerity and proper attention. They also encouraged the students taking tutorial classes on regular basis mentioning the student's importance of respective branches of studies. The faculty members also arranged seminar classes an a particular topic to make them conversant with the present day need in the context of recent global scenario. The students also took part actively in various academic and training programmes of different Engineering Colleges and Industrial Institutions including sports.

Efforts are on progress to help the students efficient through training by visiting various academic, institutional, industries, National Laboratories and well conversant in Communicate English through communicative English language training.



## MECHANISM / NORMS & PROCEDURE FOR DEMOCRATIC / GOOD GOVERNANCE

For democratic & good governance the basic need is to have a cohesion between the faculty members students the members of administration including office and the Governing Body. And the same can be achieved through discussions of the administrations and Governing Body with the faculty members and students holding meeting at least twice in a month. The problem of faculty members, lack of proper facilities in infrastructure particularly the laboratory and library (Books) has to be solved immediately, otherwise the students will suffer which will ultimately lead to a problem thus hampering the academic discipline of the college. Regular G.B meetings are hold for good running of the Institution.



## STUDENT FEEDBACK ON INSTITUTIONAL GOVERNANCE / FACULTY PERFORMANCE

The process of taking student's feed about the performance of the faculty members has already been started. This process helps in improving the academic performance of the faculty members and ultimately the performance of the institution.




## AICTE APPROVED PROGRAMMES

### BACHELOR OF TECHNOLOGY 3 YEARS (UG) DEGREE COURSE

#### DETAILS OF COURSE

Name	Nos of Seats	Duration	Cut of mark/rank for admm. for last 3 yrs	Fee	Placement Facility	Campus Placement in last 3 years
Electronics & Comm. Engg.	60	3 Years	Rank in WBJEE & AIEEE as decided by CSC & 50% Marks in P, C M in H.S Exam	17,500/-	The College is operating in the 2 <sup>nd</sup> year.	N.A
Computer Science	60	3 Years	Do	Do	Do	Do
Information & Technology	60	3 Years	Do	Do	Do	Do
Applied Elect. & Inst. Engg	60	3 Years	Do	Do	Do	Do



NAME AND DURATION OF THE PROGRAMMES HAVING AFFILIATION / COLLABORATION WITH FOREIGN UNIVERSITY (S) / INSTITUTIONS AND BEING RUN IN THE SAME CAMPUS ALONG WITH STATUS OF THEIR AICTE APPROVAL. IF THERE IS FOREIGN COLLABORATION, GIVE THE FOLLOWING DETAILS

**NOT APPLICABLE FOR THIS INSTITUTION**

➤ **viii)**

